

ZAXIS 330

- Engine Rated Power : 184 kW (250 PS)
- Operating Weight ZAXIS330/ZAXIS330LC : 31 000 kg/31 600 kg
ZAXIS350H/ZAXIS350LCH : 32 900 kg/33 400 kg
ZAXIS370MTH : 36 300 kg
ZAXIS350K/ZAXIS350LCK : 33 500 kg/34 100 kg
- Backhoe Bucket PCSA Heaped : 1.15 — 1.86 m³
CECE Heaped : 1.00 — 1.60 m³



Futuristic Performance



High Productivity

A truly high-performance machine

- 4% more production (compared to EX300-5).
- 184 kW (250 PS) powerful engine.
- 237 kN (24 200 kgf) digging force.
- 16% less fuel consumption during light load operation from auto acceleration system (compared to normal operation).

Lower Running Costs

Stronger structural component design

- Increased wear resistance of bucket joint: WC thermal spraying.
- 40-ton class D-type frame.
- New HN bushing.

Lower Maintenance Costs

Reduced maintenance time and expense

- Extended lubrication interval at bucket joint section (Every 500 hours).
- Extended replacement interval for hydraulic oil filter (Every 1 000 hours).

CRES Cab (Center pillar Reinforced Structure)

Provides Excellent Operator Comfort

- Low noise and vibration in cab.



Notes :

1. Never leave the front attachment in a raised position. Make sure the front attachment is lowered to the ground before leaving the equipment unattended. (Some of the pictures in this catalog show an unmanned machine with attachments in an operating position. These were taken for demonstration purposes only and the actions shown are not recommended under normal operating conditions.)
2. Caution plates on the machine will vary according to country.
3. Photos include optional equipment.

Z A X I S

S **&** **F**
Smarter
&
Faster

ZAXIS uses advanced technology to reduce costs while working faster.

4 % increase
in production (in H/P mode)
(compared to EX300-5)

4 % reduced
fuel consumption (in H/P mode)
(compared to EX300-5)

6 % reduced
fuel consumption (in P mode)
(compared to EX300-5)

Large Engine Provides High Efficiency

The powerful engine is equipped with an intercooler to offer outstanding fuel efficiency.

177 kW (240 PS)
EX300-5

184 kW (250 PS)

Excavating Power for Tough Job Sites

218 kN (22 200 kgf)
at normal

237 kN (24 200 kgf)
at power boost

Travel and Swing Power You Can Depend On



Auto Power Lift Increases Power on Demand

The auto power lift automatically boosts power by 9 % when the load is increased during scooping-up operation.

Auto Acceleration System Helps Reduce Fuel Consumption

Engine speed is automatically controlled in response to lever operation. This helps reduce fuel consumption, especially during light-load work.

16% less fuel consumption than normal operation

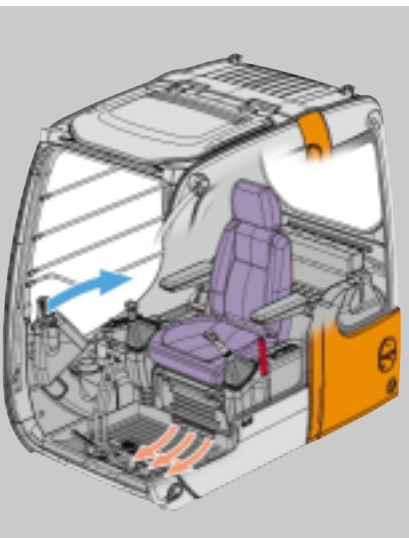
All Excavating Operations in a Single Mode

Simply select the "digging" mode for smooth and speedy front operations.



Minimum Effort
Maximum Efficiency

The operator's compartment is designed for both comfort and operating efficiency.



* Illustration shows a sample of the air flow during bi-level control.

Easy-to-Monitor Instruments

Strategically positioned instruments allow the operator to monitor the status of key areas with just a glance.

Easy-to-Operation

Switches and other essential controls are located near the operator. This helps keep operator movement to a minimum, enhancing control and helping to fight fatigue.

Auto Control Air Conditioner (Option)

Simply set the temperature and forget about it. Ducts are positioned to promote even air flow throughout the cab.



Enhanced visibility on the lower right side



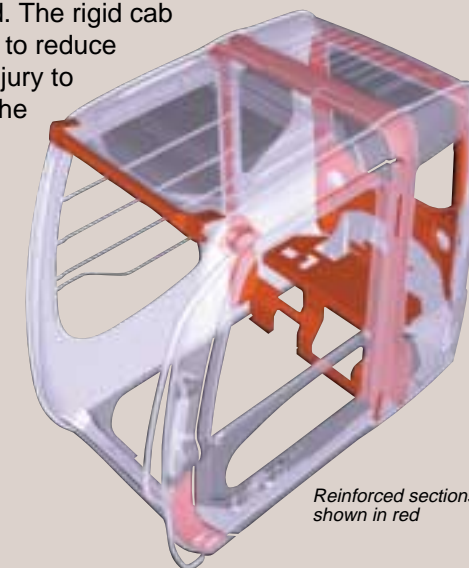
Drink holder

- Storage box
- Easy-lock front window latch
- Wide and comfortable arm rests

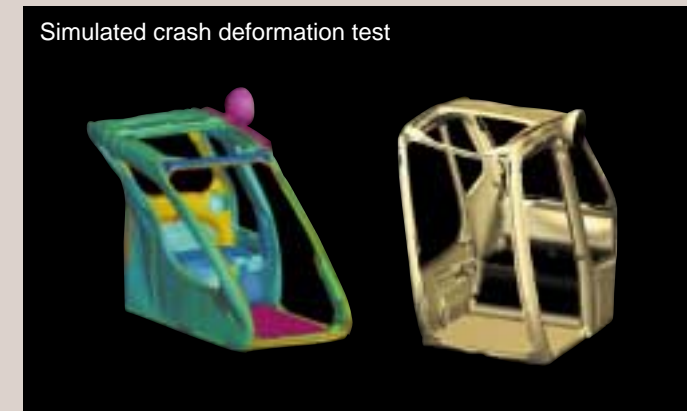
SAFETY

CRES (Center pillar Reinforced Structure) Cab

The cab is designed with "just in case" protection for the operator in mind. The rigid cab design can help to reduce a potential for injury to the operator in the event of an accident.

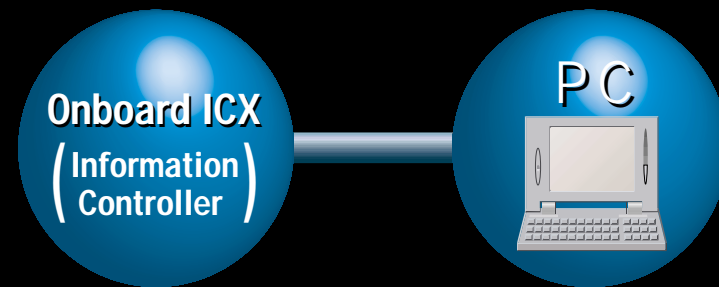


Reinforced sections shown in red



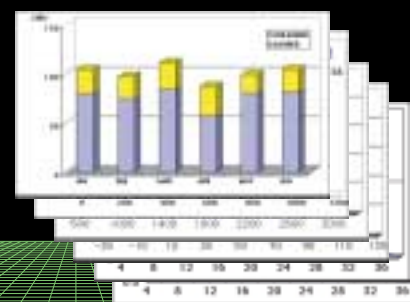
Simulated crash deformation test

Equipment Operation Status Report



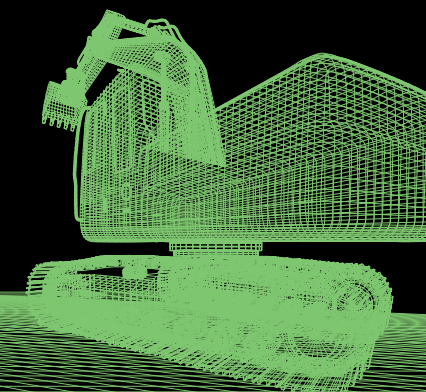
Information Services for Equipment

- Operation record
- Error record
- Alarm record
- Frequency distribution
- Radiator coolant /hydraulic temperature etc. and others.



Information Technology Support

Providing the data for making the right decisions.



Base machine for doing a wide range of jobs.

Can be used with a wide range of hydraulic attachments.

Options include large-capacity additional pump along with piping and components for the attachments.

Demolition Version K-Series

ZAXIS350K / ZAXIS350LCK



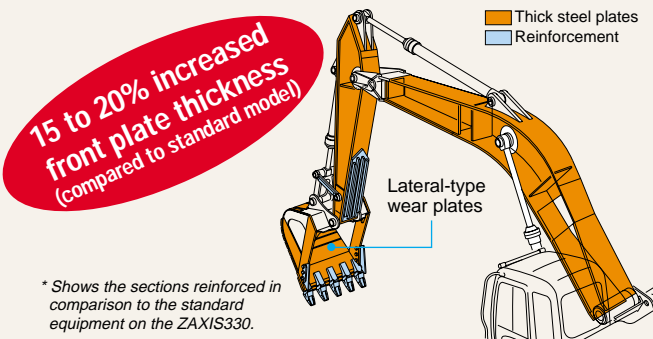
- 1 Attachment basic piping
- 2 Damage prevention plate
- 3 Reinforced link B for demolition
- 4 Front glass lower guard
- 5 6.0 mm (0.24") thickness undercover
- 6 9.0 mm (0.35") thickness track undercover
- 7 K-cab (CRES cab with overhead window & guard)
- 8 Air cleaner double filters
- 9 8 200kg (18 100 lb) added heavier counterweight
- 10 600 mm (24") reinforced triple grouser shoe

OPTION

- Accessories for breaker
- Accessories for breaker & crusher
- Accessories for 2 speed selector
- Front glass upper guard

Heavy-Duty Version H-Series (Reinforced undercarriage and increased durability)

ZAXIS350H / LCH & ZAXIS370 MTH Interchangeable Parts



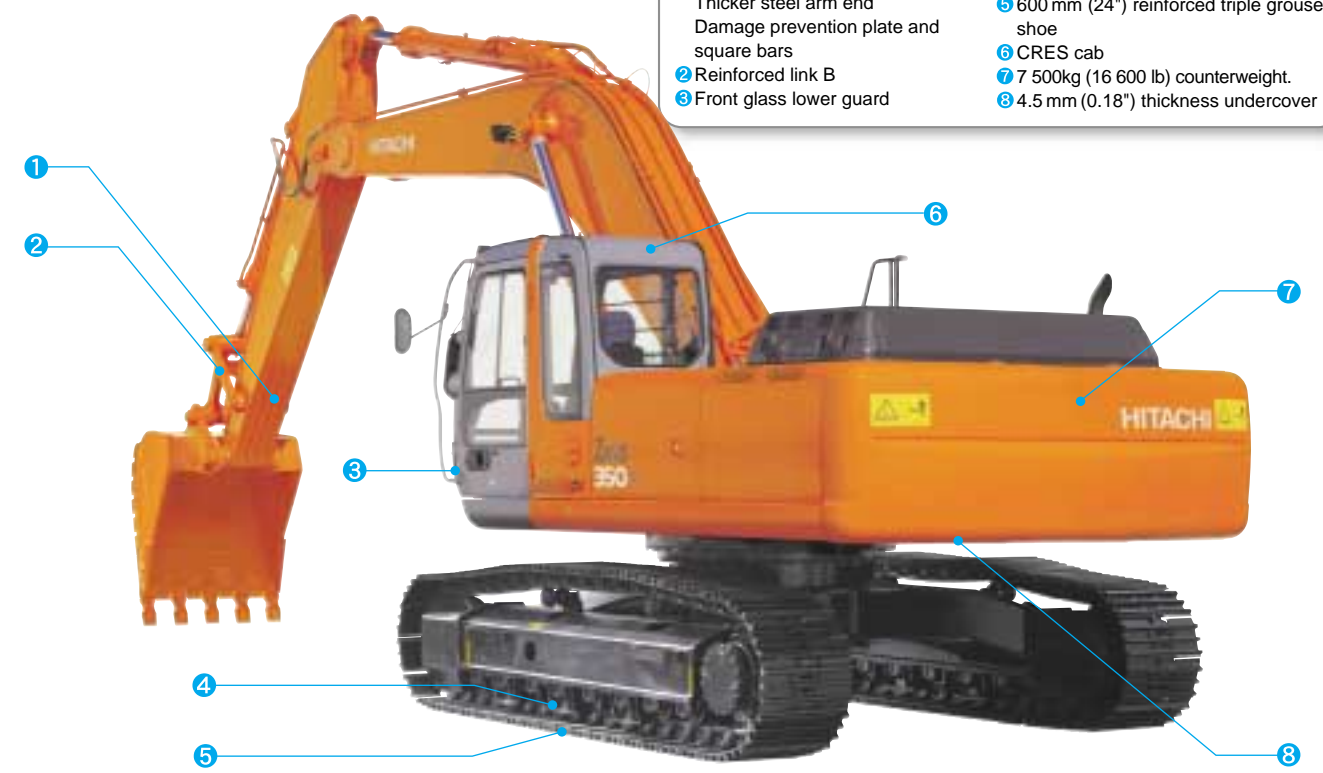
15 to 20% increased front plate thickness (compared to standard model)

Thick steel plates
Reinforcement

* Shows the sections reinforced in comparison to the standard equipment on the ZAXIS330.

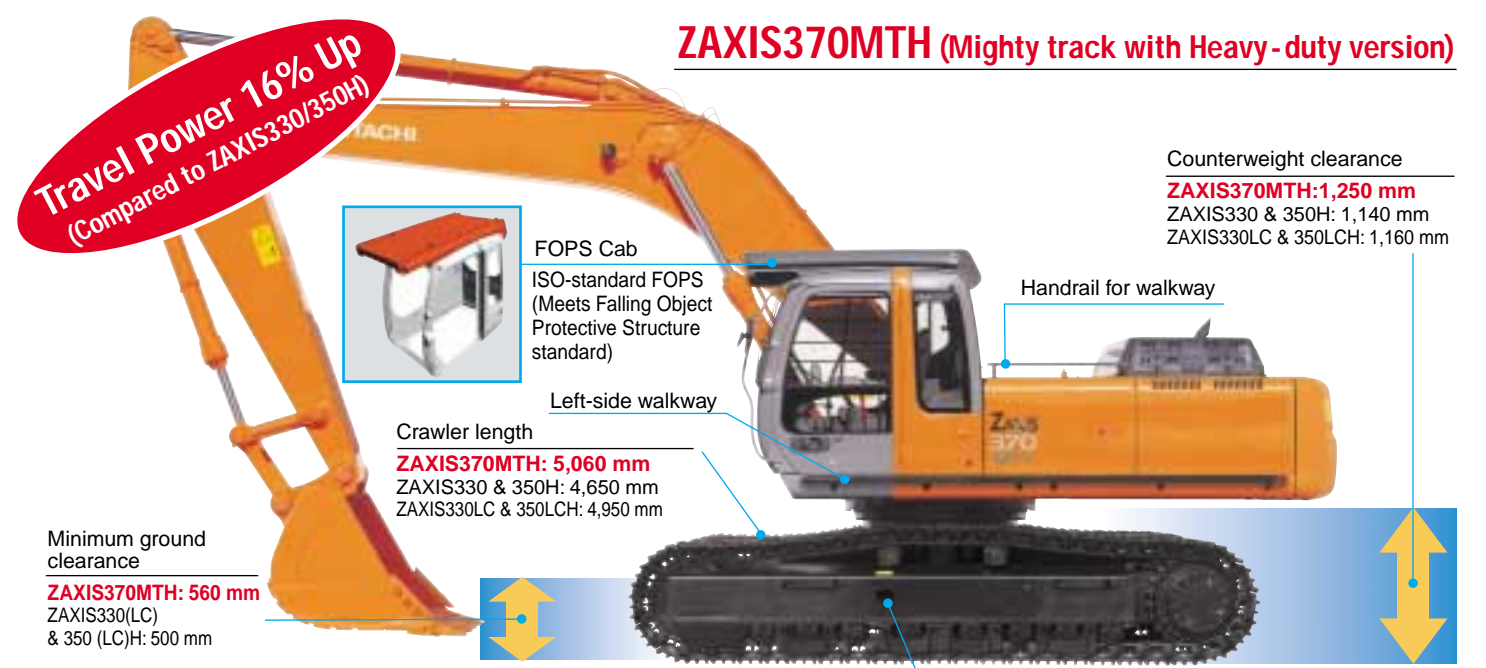
- 6.4 mm H-boom
- 3.2 m H-arm
- Damage prevention plate and square bar
- Reinforced link B
- Heavier counterweight (750 kg)
- Suspension seat
- 4.5 mm undercover for upper structure
- Rock bucket and lateral wear plates
- Air cleaner double filters
- Electric grease gun

ZAXIS350H / ZAXIS350LCH



- 1 Reinforced thick steel front section (H-boom/H-arm)
Thicker steel arm end
Damage prevention plate and square bars
- 2 Reinforced link B
- 3 Front glass lower guard
- 4 Reinforced track guard (3 units each side)
- 5 600 mm (24") reinforced triple grouser shoe
- 6 CRES cab
- 7 7 500kg (16 600 lb) counterweight.
- 8 4.5 mm (0.18") thickness undercover

ZAXIS370MTH (Mighty track with Heavy-duty version)



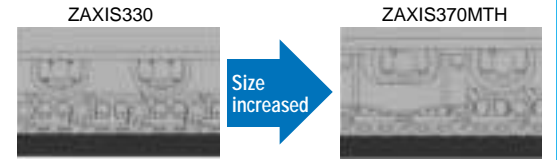
Travel Power 16% Up (Compared to ZAXIS330/350H)

Counterweight clearance
ZAXIS370MTH: 1,250 mm
ZAXIS330 & 350H: 1,140 mm
ZAXIS330LC & 350LCH: 1,160 mm

Minimum ground clearance
ZAXIS370MTH: 560 mm
ZAXIS330(LC) & 350 (LC)H: 500 mm

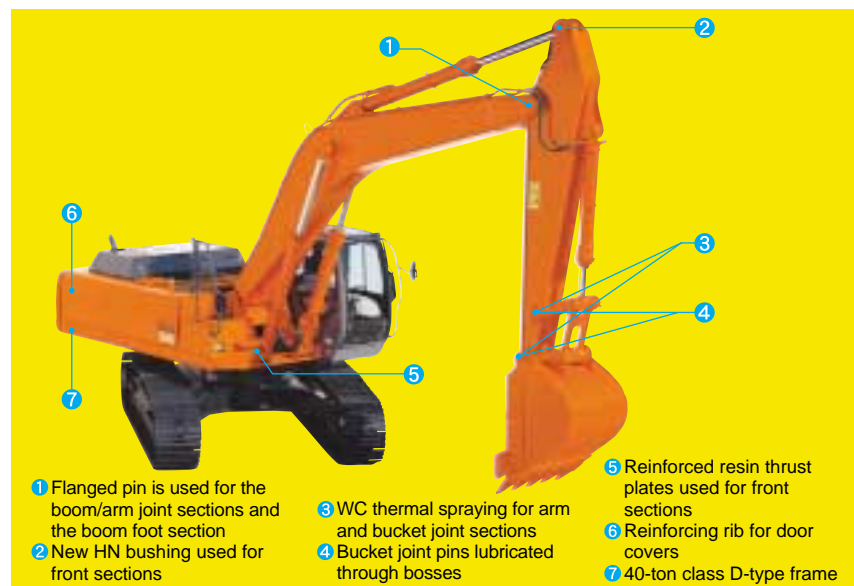
Crawler length
ZAXIS370MTH: 5,060 mm
ZAXIS330 & 350H: 4,650 mm
ZAXIS330LC & 350LCH: 4,950 mm

- #### 40-ton Class Undercarriage
- Travel device (Exclusively for ZAXIS370MTH)
 - Reinforced track frame (Exclusively for ZAXIS370MTH)
 - Upper/lower rollers for ZAXIS450
 - Track link for ZAXIS450
 - Idler for ZAXIS450
 - Track guard for ZAXIS450 (Reinforced type for MTH Single 1 unit, Double 2 units)

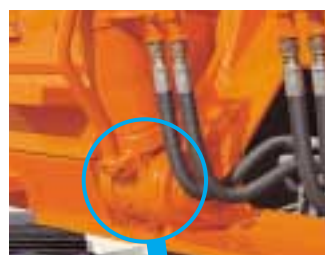


Functional & Durable

Extensive steps have been taken to support basic performance and overall durability.



- 1 Flanged pin is used for the boom/arm joint sections and the boom foot section
- 2 New HN bushing used for front sections
- 3 WC thermal spraying for arm and bucket joint sections
- 4 Bucket joint pins lubricated through bosses
- 5 Reinforced resin thrust plates used for front sections
- 6 Reinforcing rib for door covers
- 7 40-ton class D-type frame



Reinforced Resin Thrust Plates

Designed to reduce noise and resist wear.

New HN Bushing

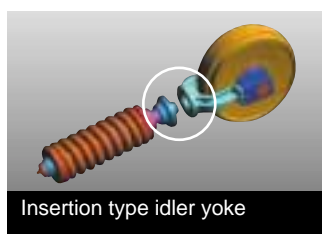


WC Thermal Spraying (Tungsten Carbide)

Used at arm end and bucket connection to increase wear resistance and reduce jerking.

Strengthened Swing Circle

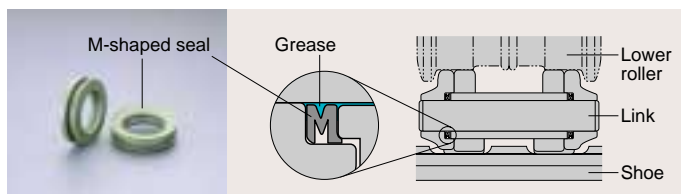
Provides support for strong excavating force.



Insertion type idler yoke

Rigid Undercarriage

Strong undercarriage section for increased durability. Designed for tough work sites.



M-Shaped Track Link Seals Provide High Grease Retention

Smart Savings

Advanced technology helps reduce maintenance cost.

Front and Bucket Components Only Need Lubrication Every 500 Hours

The improved HN bushings and reinforced resin thrust plates help reduce maintenance time and expense.

Strong Reinforced Bolt-on Side Step Resists Deformation

Engine Oil Filter and Water Separator Positioned for Easy Checking from Ground



Water separator
Engine oil filter

Hydraulic Oil Filter Only Needs Replacement Every 1000 Hours

The hydraulic oil filter can be used nearly twice as long as the previous model dramatically reducing maintenance time and expense.



ENVIRONMENTALLY FRIENDLY DESIGN



Labeled plastic parts

Labeled Plastic Parts

The type of plastic used in various parts is imprinted on them to facilitate easy recycling.

Lead-Free Wiring and Aluminium Radiator and Oil Cooler

Helps keep harmful materials out of the environment.

ENGINE

Model	Isuzu AA-6HK1X
Type	4-cycle water-cooled, direct injection
Aspiration	Turbocharged, intercooled
No. of cylinders	6
Rated power	
DIN 6271, net	H/P mode : 184 kW (250 PS) at 2 000 min ⁻¹ (rpm)
P mode	: 177 kW (240 PS) at 1 900 min ⁻¹ (rpm)
SAE J1349, net	H/P mode : 180 kW (247 hp) at 2 000 min ⁻¹ (rpm)
P mode	: 173 kW (237 hp) at 1 900 min ⁻¹ (rpm)
Maximum torque	873 N·m (89 kgf·m, 644 lbf·ft) at 1 700 min ⁻¹ (rpm)
Piston Displacement	7 790 L (475 in ³)
Bore and stroke	115 mm x 125 mm (4.53" x 4.92")
Batteries	2 x 12 V / 97 AH
Governor	Mechanical speed control with stepping motor

HYDRAULIC SYSTEM

- Work mode selector
Digging mode / Attachment mode
- Engine speed sensing system

Main pumps	2 variable displacement axial piston pumps
Maximum oil flow	2 x 290 L/min (76.6 US gpm, 63.8 Imp gpm)
Pilot pump	1 gear pump
Max. oil flow	32 L/min. (8.5 US gpm, 7.0 Imp gpm)

Hydraulic Motors

Travel	2 variable displacement axial piston motors
Swing	1 axial piston motor

Relief Valve Settings

Implement circuit	31.4 MPa (320 kgf/cm ² , 4 550 psi)
Swing circuit	31.4 MPa (320 kgf/cm ² , 4 550 psi)
Travel circuit	34.8 MPa (355 kgf/cm ² , 5 050 psi)
Pilot circuit	3.9 MPa (40 kgf/cm ² , 570 psi)
Power boost	34.3 MPa (350 kgf/cm ² , 4 980 psi)

Hydraulic Cylinders

High-strength piston rods and tubes. Cylinder cushion mechanisms provided in boom and arm cylinders to absorb shock at stroke ends.

Dimensions

	Qty.	Bore	Rod diameter
Boom	2	150 mm (5.91")	105 mm (4.13")
Arm	1	170 mm (6.69")	115 mm (4.53")
Bucket	1	145 mm (5.71")	95 mm (3.74")

Hydraulic Filters

Hydraulic circuits use high-quality hydraulic filters. A suction filter is incorporated in the suction line, and full-flow filters in the return line and swing/travel motor drain lines. Demolition version ZAXIS350K and ZAXIS350LCK use other types of high-performance full flow filters with clog indicator.

CONTROLS

Pilot controls. Hitachi's original shockless valve and quick warm-up system built in the pilot circuit. Hydraulic warm-up control system for engine and hydraulic oil.	
Implement levers	2
Travel levers with pedals	2
Attachment pedals (Demolition Version ZAXIS350K / ZAXIS350LCK)	1

UPPERSTRUCTURE

Revolving Frame

Welded sturdy box construction, using heavy-gauge steel plates for ruggedness. D-section frame for resistance to deformation.

Swing Mechanism

Axial piston motor with planetary reduction gear is bathed in oil. Swing circle is single-row, shear-type ball bearing with induction-hardened internal gear. Internal gear and pinion gear are immersed in lubricant. Swing parking brake is spring-set/hydraulic-released disc type.

Swing speed 11.8 min⁻¹ (rpm)

Operator's Cab

Independent roomy cab, 1 005 mm (40") wide by 1 675 mm (66") high, conforming to ISO* Standards. Reinforced glass windows on 4 sides for visibility. Front windows (upper and lower) can be opened. Adjustable, reclining seat with armrests; movable with or without control levers.

* International Standardization Organization

UNDERCARRIAGE

Tracks

Tractor-type undercarriage. Welded track frame using selected materials. Side frame welded to track frame. Lubricated track rollers, idlers, and sprockets with floating seals.

Track shoes with triple grousers made of induction-hardened rolled alloy. Flat and triangular shoes are also available. Heat-treated connecting pins with dirt seals. Hydraulic (grease) track adjusters with shock-absorbing recoil springs.

Numbers of Rollers and Shoes on Each Side

Upper rollers	2
Lower rollers	8: ZAXIS330 / 350H / 350K / 370MTH 9: ZAXIS330LC / 350LCH / 350LCK
Track shoes	45: ZAXIS330 / 350H / 350K / 370MTH 48: ZAXIS330LC / 350LCH / 350LCK
Track guard	1: ZAXIS330 / 330LC / 350K / 350LCK 3: ZAXIS350H / 350LCH Single 1, Double 2: ZAXIS370MTH

H-track guard on the ZAXIS350H and ZAXIS350LCH are reinforced.

Traction Device

Each track driven by 2-speed axial piston motor through planetary reduction gear for counterrotation of the tracks. Sprockets are replaceable. Parking brake is spring-set/hydraulic-released disc type. Travel shockless relief valve built in travel motor absorbs shocks when stopping travel.

Automatic transmission system:	High-Low.
Travel speeds	High: 0 to 5.5 km/h (3.4 mph) Low: 0 to 3.8 km/h (2.4 mph)
Maximum traction force	246 kN (25 100 kgf, 55 300 lbf) : ZAXIS330/350H/350K 285 kN (29 100 kgf, 64 200 lbf) : ZAXIS370MTH
Gradeability	35° (70%) continuous

WEIGHTS AND GROUND PRESSURE

Equipped with 6.40 m (21'0") boom, 3.20 m (10'6") arm and 1.40 m³ (1.83 yd³: PCSA heaped) bucket.

Shoe type	Shoe width	Operating weight	Ground pressure
Triple grouser	600 mm (24")	31 000 kg (68 300 lb)	63 kPa (0.64 kgf/cm ² , 9.10 psi)
		31 600 kg (69 700 lb)	59 kPa (0.60 kgf/cm ² , 8.53 psi)
	700 mm (28")	31 500 kg (69 400 lb)	55 kPa (0.56 kgf/cm ² , 7.96 psi)
		32 200 kg (71 000 lb)	52 kPa (0.53 kgf/cm ² , 7.54 psi)
	800 mm (31")	31 900 kg (70 300 lb)	48 kPa (0.49 kgf/cm ² , 6.96 psi)
		32 600 kg (71 900 lb)	46 kPa (0.47 kgf/cm ² , 6.68 psi)
Flat	600 mm (24")	31 800 kg (70 100 lb)	64 kPa (0.65 kgf/cm ² , 9.24 psi)
		32 500 kg (71 600 lb)	61 kPa (0.62 kgf/cm ² , 8.82 psi)

Figures in are data on the ZAXIS330LC.

Weights of the basic machines [including 6 800 kg (15 000 lb), 7 550 kg (16 600 lb) H-type and MTH-type, 8 200 kg (18 100 lb) K-type counterweight and triple grouser shoes, excluding front-end attachment, fuel, Hyd, oil, Eng. Oil and coolant etc.] are:

ZAXIS330 23 600 kg (52 000 lb) with 600 mm (24") shoes
 ZAXIS330LC 24 200 kg (53 400 lb) with 600 mm (24") shoes
 ZAXIS350H 24 900 kg (54 900 lb) with 600 mm (24") Reinforced shoes
 ZAXIS350LCH 25 400 kg (56 000 lb) with 600 mm (24") Reinforced shoes
 ZAXIS350K 25 700 kg (56 700 lb) with 600 mm (24") Reinforced shoes
 ZAXIS350LCK 26 300 kg (58 000 lb) with 600 mm (24") Reinforced shoes
 ZAXIS370MTH 28 200 kg (62 200 lb) with 600 mm (24") Reinforced shoes

Buckets

Capacity		Width		No. of teeth	Weight kg (lb)	Recommendation								
						ZAXIS330			ZAXIS330LC			ZAXIS350H / ZAXIS350LCH	ZAXIS370MTH	ZAXIS350K / ZAXIS350LCK
PCSA heaped m ³ (yd ³)	CECE heaped m ³	Without side cutters mm (in)	With side cutters mm (in)			2.66 m (8'4") arm	3.20 m (10'6") arm	4.00 m (13'2") arm	2.66 m (8'4") arm	3.20 m (10'6") arm	4.00 m (13'2") arm	3.20 m (10'6") H-arm	3.20 m (10'6") H-arm	3.20 m (10'6") K-arm
1.15 (1.50)	1.00	1 100 (43")	1 230 (48")	5	1 070 (2 360)	☉	☉	☉	☉	☉	☉	—	—	☉
1.40 (1.83)	1.20	1 280 (50")	1 410 (56")	5	1 170 (2 580)	☉	☉	☉	☉	☉	☉	—	—	☉
*1 1.40 (1.83)	1.20	1 280 (50")	1 410 (56")	5	1 130 (2 490)	☉	☉	☉	☉	☉	☉	—	—	☉
*2 1.40 (1.83)	1.20	1 280 (50")	1 410 (56")	5	1 120 (2 470)	☉	☉	☉	☉	☉	☉	—	—	☉
*3 1.40 (1.83)	1.20	1 280 (50")	1 410 (56")	5	1 150 (2 540)	☉	☉	☉	☉	☉	☉	—	—	☉
1.62 (2.12)	1.40	1 460 (57")	1 590 (63")	5	1 270 (2 800)	☉	☉	☉	☉	☉	☉	—	—	☉
1.86 (2.42)	1.60	1 640 (65")	—	5	1 200 (2 650)	☐	—	—	☐	—	—	—	—	—
*4 1.40 (1.83)	1.20	1 280 (50")	1 410 (56")	5	1 390 (3 070)	☉	☉	☉	☉	☉	☉	—	—	☉
*4 1.62 (2.12)	1.40	1 460 (57")	1 590 (63")	5	1 525 (3 360)	☉	☉	—	☉	☉	☐	—	—	☉
*5 1.15 (1.50)	1.00	1 150 (45")	1 190 (47")	5	1 230 (2 710)	●	●	☉	●	●	☉	●	●	—
*1.5 1.38 (1.80)	1.20	1 310 (52")	1 360 (54")	5	1 320 (2 910)	●	●	—	●	●	—	●	●	—
*3.5 1.38 (1.80)	1.20	1 270 (50")	1 360 (55")	5	1 360 (3 000)	●	●	—	●	●	—	●	●	—
*1.5 1.50 (1.96)	1.30	1 420 (56")	1 470 (58")	5	1 390 (3 060)	●	●	—	●	●	—	●	●	—
*3.5 1.50 (1.96)	1.30	1 380 (54")	1 470 (59")	5	1 430 (3 150)	●	●	—	●	●	—	●	●	—
*6 0.90 (1.18)	0.80	1 010 (40")	—	3	1 470 (3 240)	●	●	—	●	●	—	●	●	—
One-point ripper bucket					1	850 (1 870)	●	●	—	●	●	—	●	—
Clamshell bucket: 1.00 m ³ (1.31 yd ³ : CECE heaped), Width 975 mm (38")					9	1 490 (3 280)	☉	☉	☉	☉	☉	☉	☉	☉

- *1 Super V teeth type bucket
- *2 Super V teeth type bucket
- *3 Level-pin-type bucket
- *4 Reinforced bucket
- *5 Rock bucket
- *6 Ripper bucket

- ☉ Suitable for materials with density of 1 800 kg/m³ (3 030 lb/yd³) or less
- Suitable for materials with density of 1 600 kg/m³ (2 700 lb/yd³) or less
- Suitable for materials with density of 1 100 kg/m³ (1 850 lb/yd³) or less
- Heavy-duty service
- Not applicable

ZAXIS350H / ZAXIS350LCH (Heavy-duty version), ZAXIS370MTH (Mighty track with Heavy-duty version):

Equipped with 6.40 m (21'0") H-boom, 3.20 m (10'6") H-arm, and 1.40 m³ (1.83 yd³: PCSA heaped) Rock bucket.

	Shoe width	Operating weight	Ground pressure
ZAXIS350H		32 900 kg (72 500 lb)	67 kPa (0.68 kgf/cm ² , 9.67 psi)
ZAXIS350LCH	Reinforced Triple grouser 600 mm (24")	33 400 kg (73 600 lb)	63 kPa (0.64 kgf/cm ² , 9.10 psi)
ZAXIS370MTH		36 300 kg (80 000 lb)	68 kPa (0.69 kgf/cm ² , 9.81 psi)

ZAXIS350K / ZAXIS350LCK (Demolition version):

Equipped with 6.40 m (21'0") K-boom, 3.20 m (10'6") K-arm, and 1.40 m³ (1.83 yd³: PCSA heaped) Reinforced bucket.

	Shoe width	Operating weight	Ground pressure
ZAXIS350K	Reinforced Triple grouser 600 mm (24")	33 500 kg (73 900 lb)	68 kPa (0.69 kgf/cm ² , 9.81 psi)
ZAXIS350LCK		34 100 kg (75 200 lb)	64 kPa (0.65 kgf/cm ² , 9.24 psi)

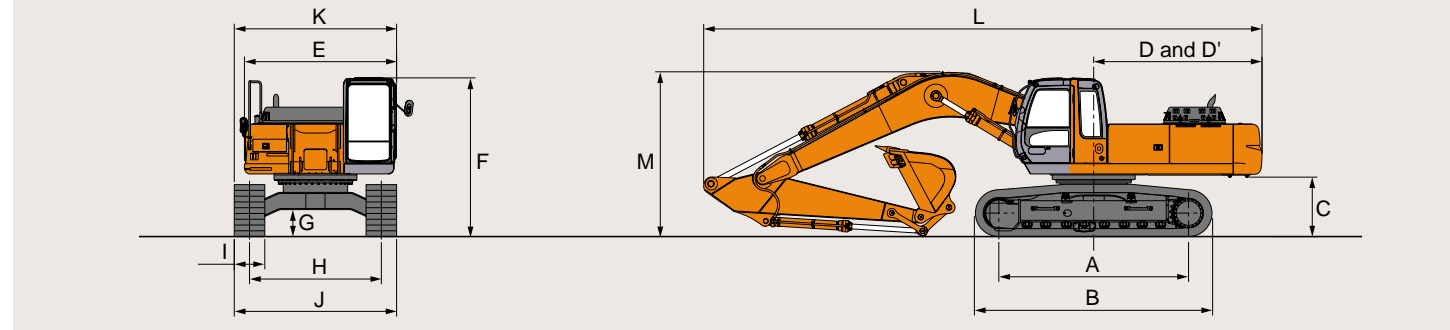
SERVICE REFILL CAPACITIES

	liters	US gal	Imp gal
Fuel tank	560.0	148.0	123.2
Engine coolant	35.0	9.2	7.7
Engine oil	36.0	9.5	7.9
Swing mechanism	16.3	4.3	3.6
Travel final device	9.2	2.4	2.0
(each side)	[MTH] 11.5	3.0	2.5
Hydraulic system	320.0	84.5	70.4
Hydraulic tank	154.0	40.7	33.9

BACKHOE ATTACHMENTS

Boom and arms are of welded, box-section design. 6.40 m (21'0") boom, and 2.66 m (8'9"), 3.20 m (10'6") and 4.00 m (13'2") arms are available. Bucket is of welded steel structure. Side clearance adjust mechanism provided on the bucket joint bracket.

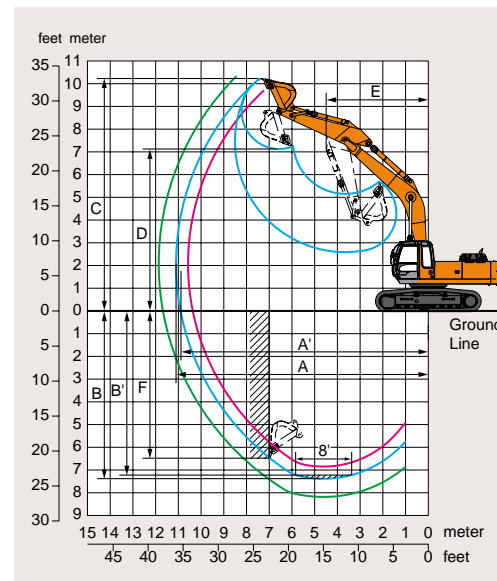
DIMENSIONS



	ZAXIS330	ZAXIS330LC	ZAXIS350H	ZAXIS350LCH	ZAXIS350K	ZAXIS350LCK	ZAXIS370MTH
A Distance between tumbles				3 730 (12'3")	4 050 (13'3")	4 050 (13'3")	
B Undercarriage length	4 640 (15'3")	4 940 (16'3")	4 650 (15'3")		4 950 (16'3")		5 060 (16'7")
*C Counterweight clearance	1 140 (3'9")			1 160 (3'10")		1 250 (4'1")	
D Rear-end swing radius	3 320 (10'11")						
D' Rear-end length	3 310 (10'10")						
E Overall width of upperstructure	2 995 (9'10")						
F Overall height of cab	3 120 (10'3")			3 140 (10'4")	3 250 (10'8")	3 270 (10'9")	3 380 (11'1")
*G Min. ground clearance	500 (1'8")			560 (1'10")			
H Track gauge	2 590 (8'6")						
I Track shoe width	G 600 (24")			G 600 (24")			
J Undercarriage width	3 190 (10'6")						
K Overall width	3 190 (10'6")						
L Overall length						Transport: 3 190 (10'6") Operate: 3 580 (11'9")	
With 2.66 m (8'4") arm	11 090 (36'5")	—			—		—
With 3.20 m (10'6") arm	10 970 (36')	10 970 (36'0")			11 000 (36'1")		10 930 (35'10")
With 4.00 m (13'2") arm	11 050 (36'3")	—			—		—
M Overall height of boom							
With 2.66 m (8'4") arm	3 470 (11'5")	—			—		—
With 3.20 m (10'6") arm	3 230 (10'7")	3 230 (10'7")			3 310 (10'10")		3 380 (11'1")
With 4.00 m (13'2") arm	3 570 (11'9")	—			—		—
N Track height	1 020 (3'4")			1 030 (3'5")		1 140 (3'9")	

* Excluding track shoe lug. G: Triple grouser shoe

WORKING RANGES

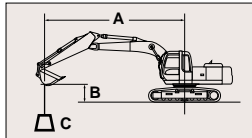


Arm length	ZAXIS330 / ZAXIS350LC			ZAXIS350H / ZAXIS350LCH	ZAXIS350K / ZAXIS350LCK	ZAXIS370MTH
	2.66 m (8'4")	3.20 m (10'6")	4.00 m (13'2")	3.20 m (10'6") H-arm	3.20 m (10'6") K-arm	3.20 m (10'6") H-arm
A Max. digging reach	10 570 (34'8")	11 100 (36'5")	11 860 (38'11")	11 100 (36'5")		
A' Max. digging reach (on ground)	10 370 (34'0")	10 900 (35'9")	11 680 (38'4")	10 900 (35'9")		
B Max. digging depth	6 850 (22'6")	7 380 (24'3")	8 180 (26'10")	7 380 (24'3")		
B' Max. digging depth (8' level)	6 650 (21'10")	7 220 (23'8")	8 050 (26'5")	7 220 (23'8")		
C Max. cutting height	9 870 (32'5")	10 230 (33'7")	10 620 (34'10")	10 230 (33'7")		
D Max. dumping height	6 830 (22'5")	7 130 (23'5")	7 500 (24'7")	7 130 (23'5")		
E Min. swing radius	5 620 (18'5")	6 480 (21'3")	7 370 (24'2")	6 480 (21'3")		
F Max. vertical wall	4 570 (15'0")	4 490 (14'9")	4 520 (24'10")	4 490 (14'9")		
Bucket digging force*	237 kN (24 200 kgf, 53 400 lbf)			207 kN (21 100 kgf, 46 500 lbf)		
Arm crowd force*	172 kN (17 500 kgf, 38 600 lbf)			165 kN (16 800 kgf, 37 000 lbf)		

Excluding track shoe lug * At power boost

LIFTING CAPACITIES

ZAXIS330 SERIES



A: Load radius
B: Load point height
C: Lifting capacity

METRIC MEASURE

ZAXIS330 Rating over-side or 360 degrees Rating over-front Unit: 1 000 kg

Conditions	Load point height	Load radius																At max. reach		
		4 m		5 m		6 m		7 m		8 m		9 m		10 m		11 m		meter		
Boom : 6.40 m Arm : 2.66 m Bucket : 2 m PCSA : 1.40 m³ CECE : 1.20 m³ Shoe : 600 mm	6 m							6.44	*7.36	5.00	*7.18							3.50	*5.20	9.60
	4 m						7.74	*9.80	5.99	*8.61	4.74	7.00	3.79	5.67				2.99	4.57	10.1
	2 m						6.89	10.5	5.46	8.23	4.40	6.63	3.58	5.45				2.83	4.39	10.2
	0 (Ground)						6.50	10.0	5.10	7.84	4.14	6.35	3.41	5.27				2.98	4.64	9.80
	-2 m		8.59	*9.35	6.38	9.93	5.01	7.74	4.06	6.27							3.59	5.51	8.80	
	-4 m		8.85	*12.3	6.58	10.1	5.17	7.91												

Conditions	Load point height	Load radius																At max. reach		
		4 m		5 m		6 m		7 m		8 m		9 m		10 m		11 m		meter		
Boom : 6.40 m Arm : 3.20 m Bucket : 2 m PCSA : 1.40 m³ CECE : 1.20 m³ Shoe : 600 mm	6 m							5.08	*6.55	3.96	*4.92						3.10	*3.31	10.1	
	4 m						7.93	*8.96	6.10	*7.99	4.80	7.07	3.82	5.71			2.70	*3.40	10.6	
	2 m			9.18	14.3	7.03	10.7	5.53	8.31	4.42	6.67	3.58	5.45				2.53	*3.67	10.7	
	0 (Ground)			8.54	*11.2	6.47	10.0	5.11	7.85	4.12	6.34	3.37	5.23				2.64	4.18	10.3	
	-2 m	*10.2	*10.2	8.48	*12.4	6.32	9.86	4.95	7.67	3.99	6.20	3.30	5.15				3.12	4.86	9.40	
	-4 m	*11.5	*11.5	8.68	*13.4	6.43	9.99	5.03	7.77	4.44	*6.54						4.09	6.31	7.80	
	-6 m			9.22	*8.33	*6.74	*6.74													

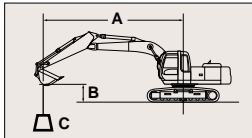
Conditions	Load point height	Load radius																At max. reach			
		4 m		5 m		6 m		7 m		8 m		9 m		10 m		11 m		meter			
Boom : 6.40 m Arm : 4.00 m Bucket : 2 m PCSA : 1.40 m³ CECE : 1.20 m³ Shoe : 600 mm	6 m																4.17	5.48	*3.23	*3.23	10.9
	4 m									4.99	*6.64	3.97	5.87	3.18	4.80			2.35	*2.67	11.4	
	2 m						7.34	*10.6	5.73	8.53	4.57	6.82	3.69	5.57	3.00	4.61	2.43	*3.37	2.23	*2.87	11.5
	0 (Ground)						6.61	10.2	5.21	7.97	4.20	6.43	3.43	5.29	2.82	4.42			2.30	*3.25	11.1
	-2 m						6.31	9.86	4.95	7.68	3.99	6.20	3.28	5.13	2.73	4.33			2.64	*3.94	10.3
	-4 m						6.32	9.87	4.93	7.66	3.98	6.20									
	-6 m						6.62	*9.23	5.21	*7.51											

ZAXIS330LC Unit: 1 000 kg

Conditions	Load point height	Load radius																At max. reach		
		4 m		5 m		6 m		7 m		8 m		9 m		10 m		11 m		meter		
Boom : 6.40 m Arm : 2.66 m Bucket : 2 m PCSA : 1.40 m³ CECE : 1.20 m³ Shoe : 600 mm	6 m							6.55	*7.37	5.09	*7.19							3.56	*5.20	9.60
	4 m							7.86	*9.82	6.10	*8.63	4.83	*7.86	3.87	6.50			3.05	5.26	10.1
	2 m							7.02	12.1	5.56	9.46	4.49	7.62	3.66	6.27			2.90	5.08	10.2
	0 (Ground)							6.58	11.6	5.21	9.07	4.23	7.34	3.49	6.08			3.06	5.37	9.70
	-2 m		8.76	*9.41	6.52	11.6	5.12	8.96	4.16	7.26							3.68	6.38	8.80	
	-4 m		9.03	*12.3	6.71	*10.6	5.28	*8.94												

Conditions	Load point height	Load radius																At max. reach		
		4 m		5 m		6 m		7 m		8 m		9 m		10 m		11 m		meter		
Boom : 6.40 m Arm : 3.20 m Bucket : 2 m PCSA : 1.40 m³ CECE : 1.20 m³ Shoe : 600 mm	6 m									5.17	*6.56	4.04	*4.97				3.17	*3.31	10.1	
	4 m							8.05	*8.99	6.20	*8.01	4.89	*7.36	3.90	6.54			2.73	*3.40	10.6
	2 m			9.34	*14.9	7.16	*11.6	5.63	9.55	4.51	7.66	3.66	6.28	2.98	5.21			2.59	*3.67	10.7
	0 (Ground)			8.71	*11.2	6.60	11.7	5.22	9.08	4.21	7.33	3.45	6.05	2.86	5.09			2.72	*4.19	10.3
	-2 m	*10.3	*10.3	8.65	*12.4	6.45	11.5	5.06	8.90	4.09	7.19	3.38	5.97				3.21	*5.16	9.40	
	-4 m	*11.6	*11.6	8.86	*13.3	6.57	*11.4	5.14	9.00											
	-6 m			9.40	*8.25	*6.65	*6.65													

Conditions	Load point height	Load radius																At max. reach				
		4 m		5 m		6 m		7 m		8 m		9 m		10 m		11 m		meter				
Boom : 6.40 m Arm : 4.00 m Bucket : 2 m PCSA : 1.40 m³ CECE : 1.20 m³ Shoe : 600 mm	6 m																4.25	*5.49	*3.28	*3.28	10.9	
	4 m									5.08	*6.65	4.05	*6.32	3.25	5.51			2.41	*2.67	11.4		
	2 m							7.47	*10.6	5.84	*8.97	4.66	7.82	3.77	6.40	3.07	5.31	2.49	*3.38	2.29	*2.87	11.4
	0 (Ground)							6.74	11.8	5.32	9.21	4.29	7.42	3.51	6.11	2.89	5.12			2.37	*3.26	11.1
	-2 m							6.44	11.5	5.06	8.91	4.08	7.19	3.36	5.95	2.80	5.03			2.72	*3.95	10.3
	-4 m						6.45	11.5	5.04	8.89	4.08	7.19										
	-6 m						6.76	*9.19	5.32	*7.46												



A: Load radius
B: Load point height
C: Lifting capacity

METRIC MEASURE

ZAXIS350H Rating over-side or 360 degrees Rating over-front Unit: 1 000 kg

Conditions	Load point height	Load radius																At max. reach								
		4 m		5 m		6 m		7 m		8 m		9 m		10 m		11 m		meter								
H-boom : 6.40 m H-arm : 3.20 m Rock-bucket : 2 m PCSA : 1.38 m³ CECE : 1.20 m³ Shoe : 600 mm	6 m																5.33	*6.28	4.13	*4.71			*3.12	*3.12	10.1	
	4 m									8.38	*8.67	6.42	*7.70	5.03	*7.05	3.98	5.98			2.75	*3.20	10.6				
	2 m									9.72	*14.4	7.41	*11.2	5.81	8.74	4.63	6.99	3.72	5.70	3.01	4.70			2.59	*3.47	10.7
	0 (Ground)									9.02	*11.5	6.81	10.6	5.36	8.25	4.30	6.65	3.50	5.47	2.88	4.56			2.72	*3.99	10.3
	-2 m	*10.6	*10.6	8.95	*12.6	6.64	10.4	5.18	8.06	4.16	6.50	3.42	5.37											3.22	*4.95	9.40
	-4 m	*11.7	*11.7	9.17	*13.0	6.77	10.5	5.27	8.16																	
	-6 m									*7.98	*7.98	*6.42	*6.42													

ZAXIS350LCH Unit: 1 000 kg

Conditions	Load point height	Load radius																At max. reach								
		4 m		5 m		6 m		7 m		8 m		9 m		10 m		11 m		meter								
H-boom : 6.40 m H-arm : 3.20 m Rock-bucket : 2 m PCSA : 1.38 m³ CECE : 1.20 m³ Shoe : 600 mm	6 m																5.42	*6.28	4.22	*4.76			*3.12	*3.12	10.1	
	4 m									8.50	*8.69	6.52	*7.71	5.12	*7.06	4.06	*6.63			2.81	*3.20	10.6				
	2 m									9.88	*14.5	7.54	*11.3	5.91	*9.37	4.72	8.03	3.80	6.56	3.08	5.43			2.66	*3.48	10.7
	0 (Ground)									9.19	*11.5	6.94	12.3	5.46	9.54	4.40	7.67	3.58	6.32	2.95	5.29			2.79	*3.99	10.3
	-2 m	*10.7	*10.7	9.12	*12.6	6.78	12.1	5.29	9.34	4.26	7.52															



STANDARD EQUIPMENT

Standard equipment may vary by country, so please consult your Hitachi dealer for details.

ENGINE

- H/P mode control
- E mode control
- 50 A alternator
- Dry-type air filter with evacuator valve (with safety element)
- Cartridge-type engine oil filter
- Cartridge-type fuel filter
- Air cleaner double filters
- Radiator and oil cooler with dust protective net
- Radiator reserve tank
- Fan guard
- Isolation-mounted engine
- Auto-idle system
- Auto acceleration system

HYDRAULIC SYSTEM

- Work mode selector
- Engine speed sensing system
- E-P control system
- Power boost
- Auto power lift
- Quick warm-up system for pilot circuit
- Shockless valve in pilot circuit
- Boom-arm anti-drift valve
- Control valve with main relief valve
- Extra port for control valve
- Suction filter
- Full-flow filter
- Pilot filter

CAB

CRES (Center pillar Reinforced Structure) cab

- All-weather sound-suppressed steel cab equipped with reinforced
- Tinted (bronze color) glass windows
- 4 fluid-filled elastic mounts
- Openable front windows-upper, and lower and left side windows

- Intermittent windshield retractable wipers
- Front window washer
- Adjustable reclining seat with adjustable armrests
- Footrest
- Electric double horn
- AM - FM radio with digital clock
- Auto-idle / acceleration selector
- Seat belt
- Drink holder
- Cigar lighter
- Ashtray
- Storage box
- Glove compartment
- Floor mat
- Heater
- Pilot control shut-off lever
- Engine stop knob.

MONITOR SYSTEM

- Meters:
 - Hourmeter and trip-meter, engine coolant temperature gauge and fuel gauge.
- Warning lamps:
 - Alternator charge, engine oil pressure, engine overheat, air filter restriction and minimum fuel level.
- Pilot lamps:
 - Engine preheat, engine oil level, engine coolant level, hydraulic oil level, work light, auto-idle, auto-acceleration, digging mode and attachment mode
- Alarm buzzers:
 - Engine oil pressure and engine overheat

LIGHTS

- 2 working lights

UPPERSTRUCTURE

- Undercover
- 6 800 kg (15 000 lb) counter-weight
- Fuel level float
- Hydraulic oil level gauge
- Tool box
- Utility space
- Rearview mirror (right & left side)
- Swing parking brake

UNDERCARRIAGE

- Travel parking brake
- Travel motor covers
- Track guards and hydraulic track adjuster
- Bolt-on sprocket
- Upper rollers and lower rollers
- Reinforced track links with pin seals
- 600 mm (24") triple grouser shoes

FRONT ATTACHMENTS

- HN bushing
- WC thermal spraying
- Reinforced resin thrust plate
- Flanged pin
- Bucket clearance adjust mechanism
- Monolithically cast bucket link A
- Centralized lubrication system
- Dirt seal on all bucket pins
- 3.20 m (10'6") arm
- 1.40 m³ (1.83 yd³ : PCSA heaped) bucket

MISCELLANEOUS

- Standard tool kit
- Lockable machine covers
- Lockable fuel filling cap
- Skid-resistant tapes, plates and handrails.
- Travel direction mark on track frame

ZAXIS350H/ZAXIS350LCH (Heavy-duty version), ZAXIS370MTH (Mighty track with Heavy-duty version)

- H-boom 6.40 m (21'0") and H-arm 3.20 m (10'6")
- Damage prevention plate and square bars
- 1.40 m³ (1.83 yd³ : PCSA heaped) H-reinforced bucket
- Reinforced link B
- Front glass lower guard
- 4.5 mm (0.18") thickness undercover
- 7 550 kg (16 600 lb) counter-weight
- 600 mm (24") reinforced triple grouser shoe
- Reinforced track guard (2 units each side)
- Reinforced side steps (bolt mounted)
- Air cleaner double filters

ZAXIS350K / ZAXIS350LCK (Demolition version)

- K-cab (CRES cab with overhead window and guard)
- K-boom 6.40 m (21'0") and K-arm 3.20 m (10'6")
- 1.40 m³ (1.83 yd³ : PCSA heaped) K-reinforced bucket
- Reinforced link B for demolition
- Front glass lower guard
- Attachment basic piping
- Damage prevention plate
- 6.0 mm (0.24") thickness undercover
- Track undercover
- Reinforced side step (bolt mounted)
- 600 mm (24") reinforced triple grouser shoe
- 8 200 kg (18 100 lb) counter-weight
- High-performance full-flow filter (with restriction indicator)
- Air cleaner double filters



OPTIONAL EQUIPMENT

Optional equipment may vary by country, so please consult your Hitachi dealer for details.

- Auto control air conditioner
- Suspension seat
- Hose rupture valves
- Electric fuel refilling pump
- Swing motion alarm device with lamps
- Travel motion alarm device
- Additional pump
- Auto-lubrication system
- KAB 515 suspension seat
- Pre-cleaner
- Fuel double filters
- Tropical cover
- Large-capacity battery
- Attachment basic piping
- Accessories for breaker
- Accessories for breaker & crusher
- Accessories for 2 speed selector
- 7500 kg (16 600 lb) counterweight
- Front glass lower guard
- Front glass upper guard
- K-cab (CRES cab with overhead window and guard)
- 600 mm (24") reinforced triple grouser shoes
- Reinforced track guard (2 units each side)
- Full track guard
- Additional light (on the top of the cab)
- Rear light

*Comparative information based on current Japan domestic model.
These specifications are subject to change without notice.
Illustrations and photos show the standard models, and may or may not include optional equipment, accessories, and all standard equipment with some differences in color and features.*

Hitachi Construction Machinery Co., Ltd.

Head Office: 5-1 Koraku 2-chome, Bunkyo-ku,
Tokyo 112-8563, Japan

Telephone: (03)3830-8050

Facsimile: (03)3830-8202

KS-E370

01.5 (CD/HP, HT4)